

Echo Audiology: Eight years of evidence-based, patient-centered hearing care

(May is Speech and Hearing Month in Canada)

Since opening in Orléans in 2017, Echo Audiology has built its reputation on clinical depth, teamwork and a holistic approach, earning multiple clinical and community awards along the way.

Owner and Head Audiologist Karine Bossé brings over 15 years of clinical experience to a practice she deliberately designed around collaboration and quality of care. “I am most proud of our services being so clinically driven and patient-centered” she says. “Measuring hearing is only one part of the process. Patient needs are unique, and our team approach allows us to draw on a broader range of perspectives and expertise.”

That philosophy also shapes the pace of appointments, which are intentionally unhurried so patients can ask questions and discuss their concerns.

Navigating Hearing Aids

Among the clinic’s newer offerings, the Hearing Aid Comparison Consultation offers a structured and transparent way to

navigate device selection. This appointment lets patients listen to and compare leading brands in realistic situations, with an on-hand clinician to answer their questions.

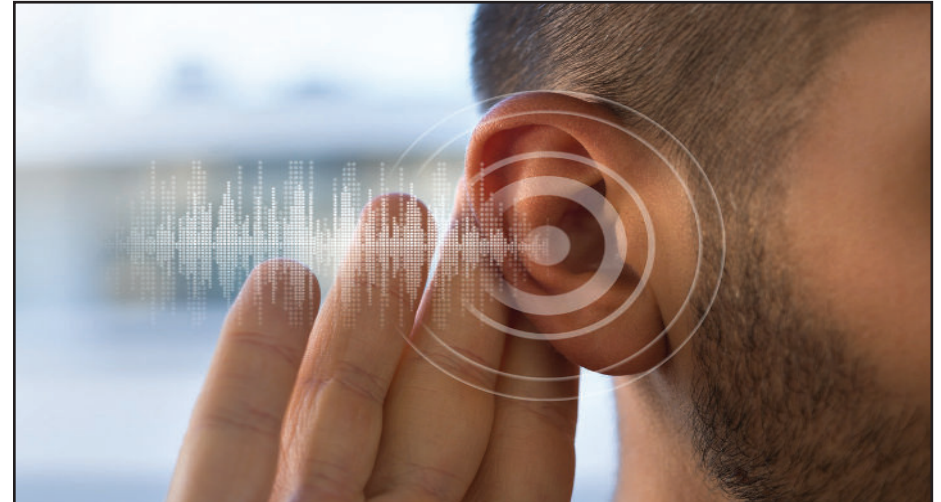
“We spend a great deal of time staying current with hearing aid technologies and how different manufacturers approach sound,” says Bossé, “but sometimes patients need to hear the differences for themselves.”

Because no two people experience hearing loss the same way, this hands-on session helps patients arrive at a more confident and informed decision, regardless of where they are in their process of selecting hearing aids.

Personalized Tinnitus Care

Tinnitus care is another cornerstone of the practice, an evolving field that requires up to date clinical approaches. This consultation has seen significant and sustained interest from both private sector patients and those covered by insurance plans, particularly military members and veterans supported through the Blue Cross program (CAF, RCMP & VAC).

As tinnitus often accompanies hearing



or ear-related factors, care typically begins with a comprehensive hearing assessment and tinnitus specific case history. That foundation helps pinpoint potential underlying causes, select the appropriate management or rehabilitation pathway, and determine whether further medical referrals are warranted. In-depth counselling is provided throughout, helping patients better understand their symptoms and how to manage them.

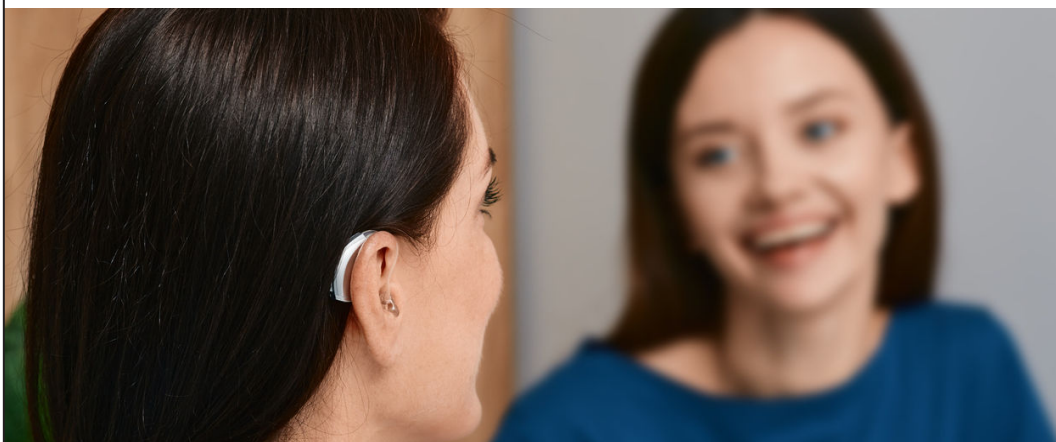
Reliable Care, Community Roots

Across every service, Echo Audiology centres its work on clear, individualized care grounded in each patient’s unique clinical profile. It’s an approach the clinic has upheld since day one, and one that Karine Bossé and her team remain proud to deliver to the Orléans and Ottawa communities.

To learn more about our services, visit www.echoaudiology.com.



- Hearing Assessments for Children
- Hearing Assessments for Adults
- Hearing Assessments for Blue Cross Members (VAC, CAF, RCMP)
- Tinnitus Consultations & Counselling
- Hearing Aid Comparison Consultations
- Hearing Aids for Private & Funded Patients, Including for Tinnitus
- Ongoing Care for Hearing Aid Patients
- Ear Consultations & Wax Removal
- Custom Earmoulds & Hearing Protection



Bilingual services (English and French)

Award-winning team led by nationally certified Audiologist

Locally owned and conveniently located in Orléans

Serving the community since 2017

373 Vantage Drive,
Unit 1, Orléans, ON

info@echoaudiology.com
www.echoaudiology.com

613-841-3033